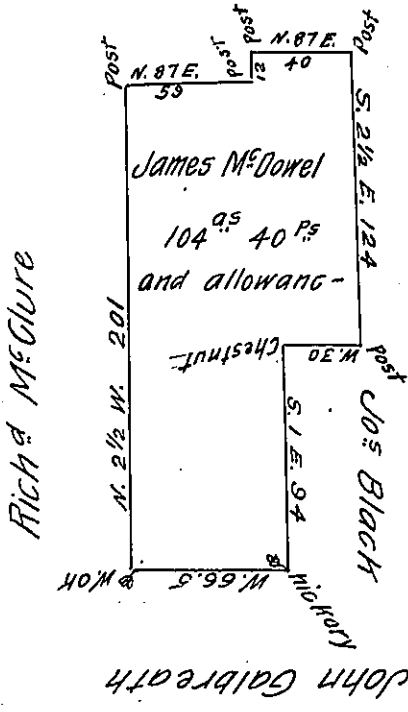


C-134-19<sup>2</sup>  
David McDowel



C-134-290  
Beginning at the N.E. Corner

1 <sup>st</sup> Cours-	S. 2 1/2 E.	124	perches
2 <sup>d</sup> Do.	West	30	Do.
3 <sup>d</sup> Do.	S. 1 E.	94	
4 <sup>th</sup> Do.	West	66-5	
5 <sup>th</sup> Do.	N. 2 1/2 W.	201	
6 <sup>th</sup> Do.	N. 87 E.	59	
7 <sup>th</sup> Do.	N. 2 1/2 W.	12	
8 <sup>th</sup> Do.	N. 87 E.	40	

C 22 - 42

Pg 15-8

The above is the draft of a tract of Land Situate on the waters of Wolfcreek, Wolfcreek Township Mercer County. Surveyed this 24<sup>th</sup> day of May A.D. 1824 for James McDowel in pursuance of his actual settlement and residence thereon. He was residing with his family on it at the time of surveying. Has a House and Barn with about thirty-five acres cleared and cultivated on it.

This is a part of a four hundred acre tract, which was settled by and divided among three Brothers of the McDowels, a warrant and patent has been obtained for a part in the name of Matthew McDowel.

It does not appear from the Books and other documents in my possession to have been appropriated by warrant or otherwise to any person, other than this applicant.

Gabriel Hiester Esq<sup>r</sup> }  
Surveyor General }

A. Brown D.S.

M.G.

I believe there is no adverse claim to this land and Mr. McDowel would be desirous to have his title upon a warrant of acceptance, and the Patent to issue; if consistant. A.B.

IN TESTIMONY that the above is a copy of the original remaining on file in the Department of Internal Affairs of Pennsylvania, made conformably to an Act of Assembly approved the 16th day of February, 1833, I have hereunto set my Hand and caused the Seal of said Department to be affixed at Harrisburg, this ninth day of January 1908.

*Henry Horner*  
Secretary of Internal Affairs.